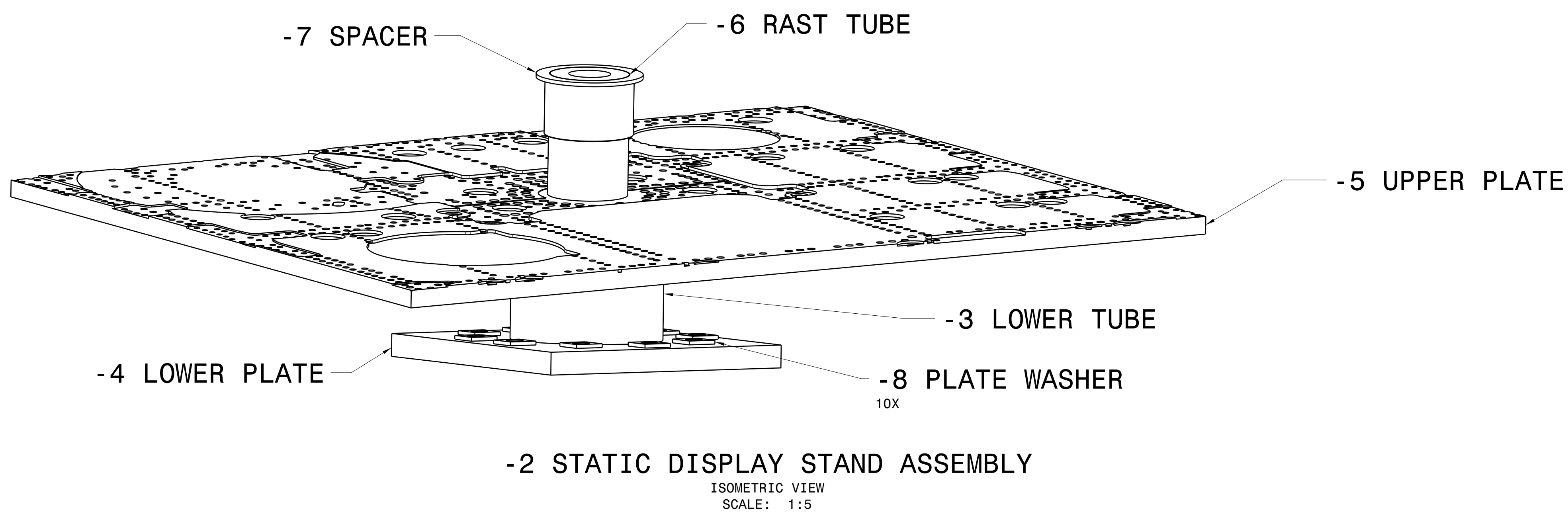


NOTES:

- THIS DRAWING WAS DEVELOPED TO THE FOLLOWING STANDARDS/SPECIFICATIONS:  
ASME Y14.100-2017 ENGINEERING DRAWING PRACTICES  
ASME Y14.5-2018 DIMENSIONING AND TOLERANCING  
ASME Y14.41-2019 DIGITAL PRODUCT DEFINITION  
MIL-STD-31000B TECHNICAL DATA PACKAGE
- PART GEOMETRY IS DEFINED BY SOLID MODEL 22E2946-2-.STP IN CONJUNCTION WITH THIS DRAWING. REFER TO SOLID MODEL FOR ANY DIMENSIONAL DATA THAT IS NOT SPECIFIED IN THE DRAWING SHEETS. UNLESS OTHERWISE SPECIFIED, A TOLERANCE OF ± .030 INCHES AND ANGULAR TOLERANCE OF ± .5 DEGREES APPLIES TO ALL DIMENSIONS THAT ORIGINATE FROM SOLID MODEL.
- CAD MAINTAINED. CHANGES SHALL BE INCORPORATED BY THE DESIGN ACTIVITY.
- PART MARKING SHALL BE IN ACCORDANCE WITH MIL-STD-130N-2012.
- UNLESS OTHERWISE SPECIFIED, ALL FEATURES OF THE PART ARE DEFINED TO NOMINAL CONDITIONS.
- PARTS SHALL BE PACKAGED AND PRESERVED IN ACCORDANCE WITH MIL-STD-2073.
- BREAK ALL SHARP EDGES.
- 8.** SURFACE TREATMENT (EXCEPT WHERE NOTED OTHERWISE):  
ONE COAT EPOXY PRIMER, MIL-PRF-23377, TYPE I, IAW MIL-STD-7179.  
ONE COAT POLYURETHANE COATING, MIL-PRF-85285, TYPE IV, CLASS H, COLOR NO. 36320 IAW MIL-STD-7179 AND FED-STD-595.
- 9.** MARKED FASTENERS ARE NOT PRE-DRILLED ON -5 UPPER PLATE AND SHALL BE MATCH DRILLED AT INSTALLATION TO EXISTING HOLE LOCATIONS ON THE AIRCRAFT. HOLE SIZE SHALL BE .250-.255 INCH DIAMETER.
- 10.** NAS6604 BOLTS ARE INSTALLED AT MARKED FASTENER LOCATIONS. FASTENER GRIP LENGTH TO BE DETERMINED AT INSTALLATION.
- 11.** TORQUE MS21044C4 NUTS TO 100 ±5 IN-LB.
- 12.** -6 RAST TUBE POSITION SHALL BE LOCATED DURING INSTALL ON AIRCRAFT. TUBE SHALL BE CENTERED IN AIRCRAFT RAST FITTING AFTER -5 UPPER PLATE HAS BEEN LOCATED ON THE AIRCRAFT. LOCATION DIMENSIONS PROVIDED FOR REFERENCE ONLY.
- 13.** -7 SPACER SHALL BE INSTALLED SO THAT UPPER SURFACE IS EVEN WITH UPPER SURFACE OF -6 RAST TUBE (± 0.100 INCHES). A GAP BETWEEN THE LOWER SURFACE OF THE SPACER FLANGE AND THE AIRCRAFT STRUCTURE IS NORMAL.
- 14.** INNER DIAMETER TO BE MACHINED DURING INSTALLATION AFTER MEASURING APPROPRIATE BORE LOCATION. CONCENTRICITY IS SHOWN BUT IS NOT A REQUIREMENT. HOLE THROUGH SPACER MAY BE DRILLED OFF-CENTER AS NECESSARY TO ACHIEVE APPROPRIATE FIT BETWEEN RAST TUBE AND AIRFRAME. MINIMUM WALL THICKNESS ALLOWED IS 0.050 INCH.
- ALL WELDS SHALL BE IN ACCORDANCE WITH AWS D1.1/D1.1M:2020.
- 16.** DO NOT PAINT OUTER DIAMETER OF -6 RAST TUBE.
- 17.** DO NOT PAINT INNER DIAMETER OF -7 SPACER.

REVISION HISTORY			
ZONE	REV	DESCRIPTION	APPROVED



FIND NO.	NO REQ PER ASSY	CAGE	PART OR IDENTIFYING NO.	NOMENCLATURE OR DESCRIPTION	STOCK	MATERIAL	MATERIAL SPEC	FINISH
			148 80205 NAS1149C0432R	WASHER				
			74 80205 MS21044C4	NUT				
			74 80205 NAS6604-XX	BOLT				
	10		96916 22E2946-8	PLATE WASHER	2.00 X 2.00 X 0.25	A36 STEEL PLATE	ASTM A36	
	1		96916 22E2946-7	SPACER	4.00 X 1.00 X 7.00 ∅	A106 STEEL PIPE	ASTM A106, GRADE B	
	1		96916 22E2946-6	RAST TUBE	8.00 X 1.25 X 5.25 ∅	A106 STEEL PIPE	ASTM A106, GRADE B	
	1		96916 22E2946-5	UPPER PLATE	48.0 X 62.0 X 1.250	A36 STEEL PLATE	ASTM A36	
	1		96916 22E2946-4	LOWER PLATE	18.00 X 18.00 X 1.375	A36 STEEL PLATE	ASTM A36	
	1		96916 22E2946-3	LOWER TUBE	9.25 X 0.375 X 10.00 ∅	A500 STEEL TUBE	ASTM A500, GRADE C	
	1		96916 22E2946-2	ASSEMBLY, STATIC DISPLAY STAND				2
	1		96916 22E2946-1	INSTL, STATIC DISPLAY STAND				

PARTS LIST

UNLESS OTHERWISE SPECIFIED DIMENSIONS ARE IN INCHES TOLERANCES ON:  
 DECIMALS FRACTIONS ANGLES  
 .XX\* .03 ~ ±.5'  
 .XXX\* .010

NO. FINISH TABLE  
 1 MACHINE FINISH 125  
 2 SEE FLAG NOTE 8

THIRD ANGLE PROJECTION

DRAWN A. MCCALLISTER 11-8-23  
 CHECKED  
 ENGINEER  
 ENGINEER  
 APPROVED  
 APPROVED

N/A SH-60F DSH  
 NEXT ASSY USED ON CONTR  
 APPLICATION CONTR NO.

DESTRUCTION NOTICE -FOR UNCLASSIFIED, LIMITED DOCUMENTS, DESTROY BY ANY METHOD THAT WILL PREVENT DISCLOSURE OF CONTENTS OR RECONSTRUCTION OF THE DOCUMENT. FOR CLASSIFIED DOCUMENTS, FOLLOW THE PROCEDURES IN DDSS220.22-M.  
 DISTRIBUTION STATEMENT D -DISTRIBUTION AUTHORIZED TO DEPARTMENT OF DEFENSE AND U.S. DOD CONTRACTORS ONLY DUE TO CRITICAL TECHNOLOGY, DETERMINED ON 16 JUNE, 2015. OTHER REQUESTS FOR THIS DOCUMENT SHALL BE REFERRED TO COMMANDING OFFICER, FLEET READINESS CENTER EAST, MARINE CORPS AIR STATION, CHERRY POINT, N.C. 28533

CAD MAINTAINED. CHANGES SHALL BE INCORPORATED BY THE DESIGN ACTIVITY

FLEET READINESS CENTER - EAST  
 U.S. MARINE CORPS AIR STATION  
 CHERRY POINT, NC

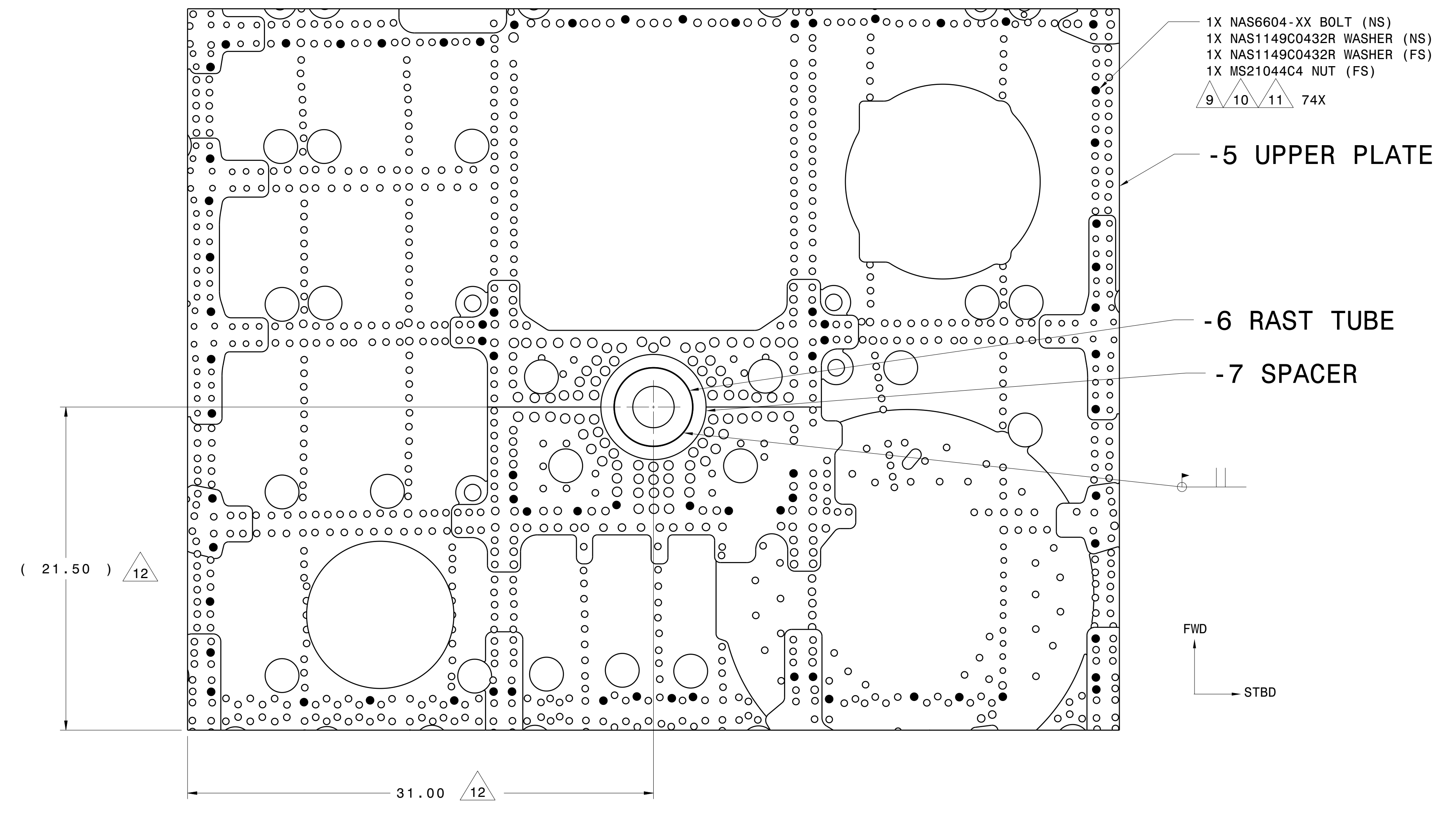
TITLE  
**SH-60F STATIC DISPLAY STAND**

SCALE NONE REF  
 SIZE E  
 CAGE CODE 96916  
 DWG NO. 22E2946  
 REV -

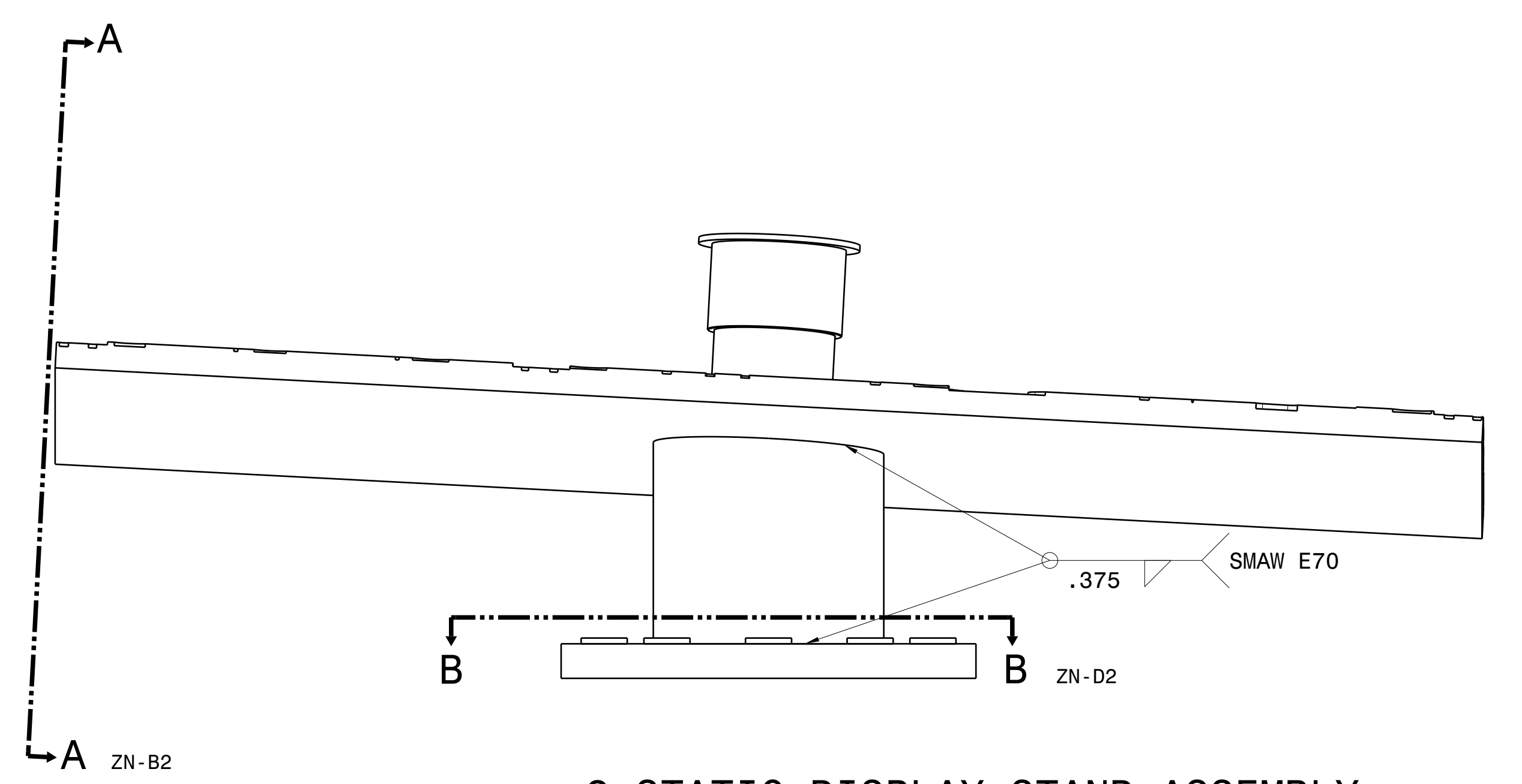
FILE NUMBER: Z:/FST-DATA-114-014-3/ENGINEERING DRAWINGS/REL/11-8-23/22E2946

REV SH REV STATUS  
 3 2 1  
 SHEET 1 OF 3

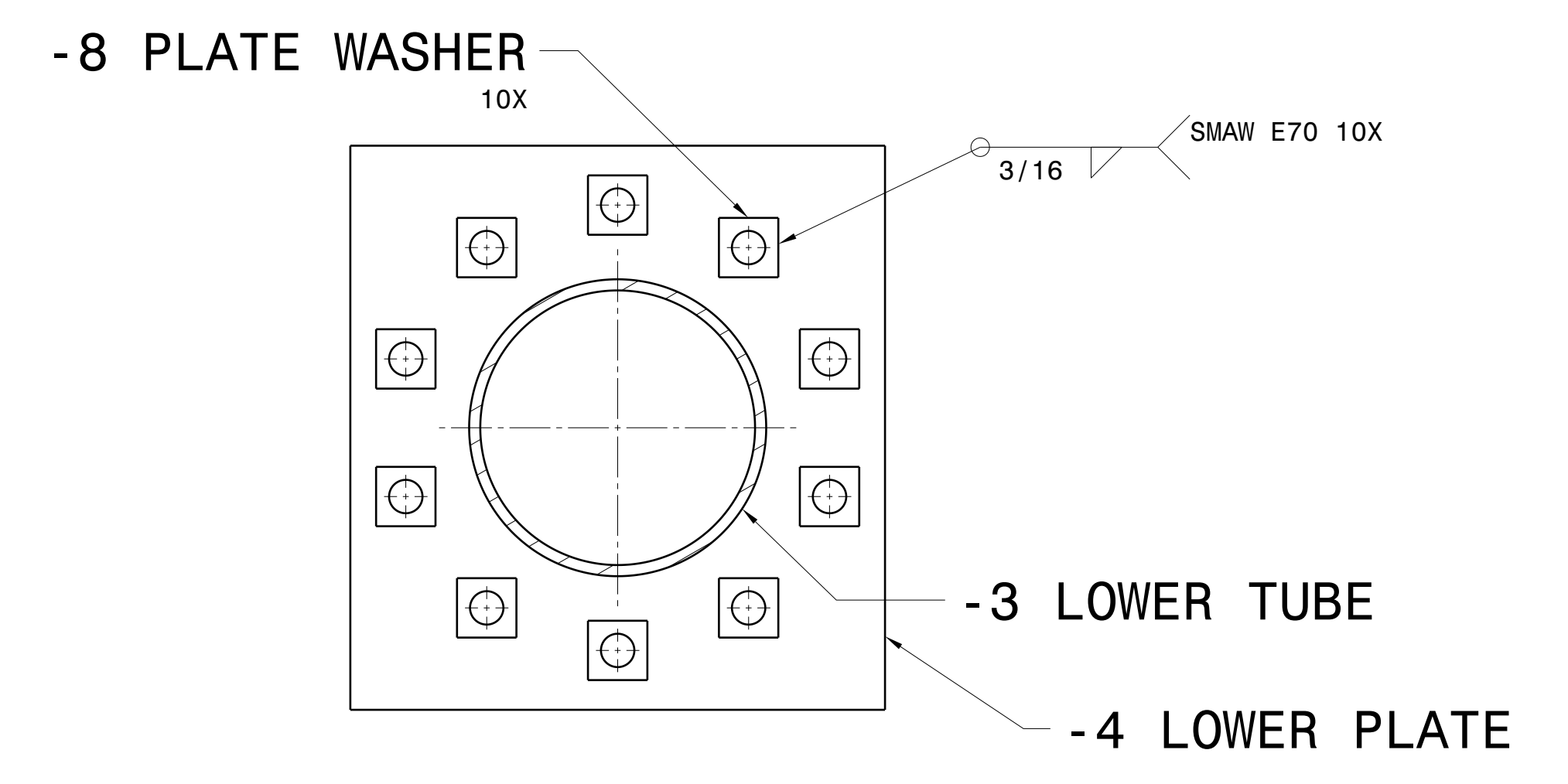
ZONE		REV	DESCRIPTION	CHECKED	APPROVED



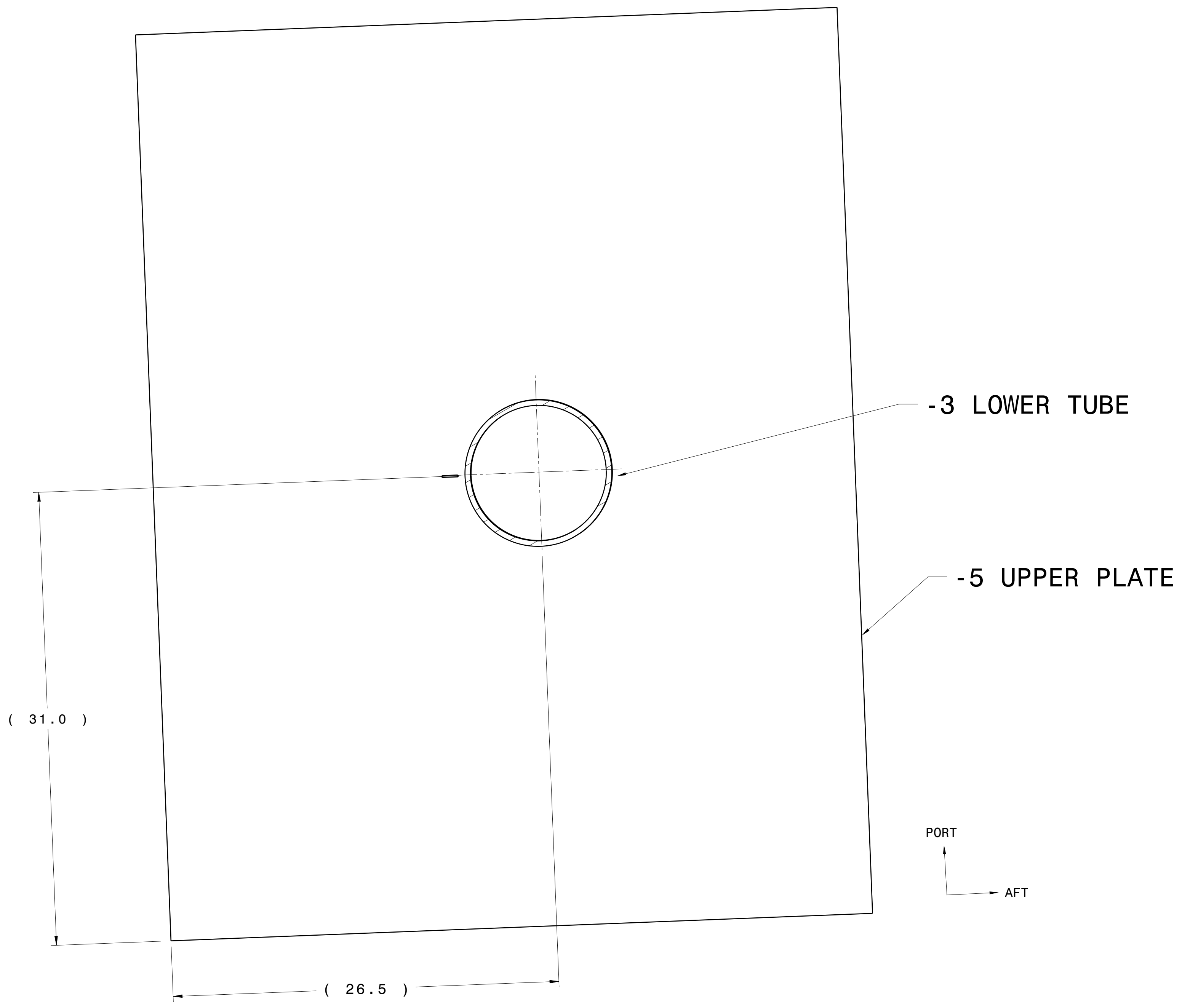
**-1 STATIC DISPLAY STAND INSTL**  
 (VIEW LOOKING DOWN - AIRCRAFT NOT SHOWN)  
 SCALE: 1:5



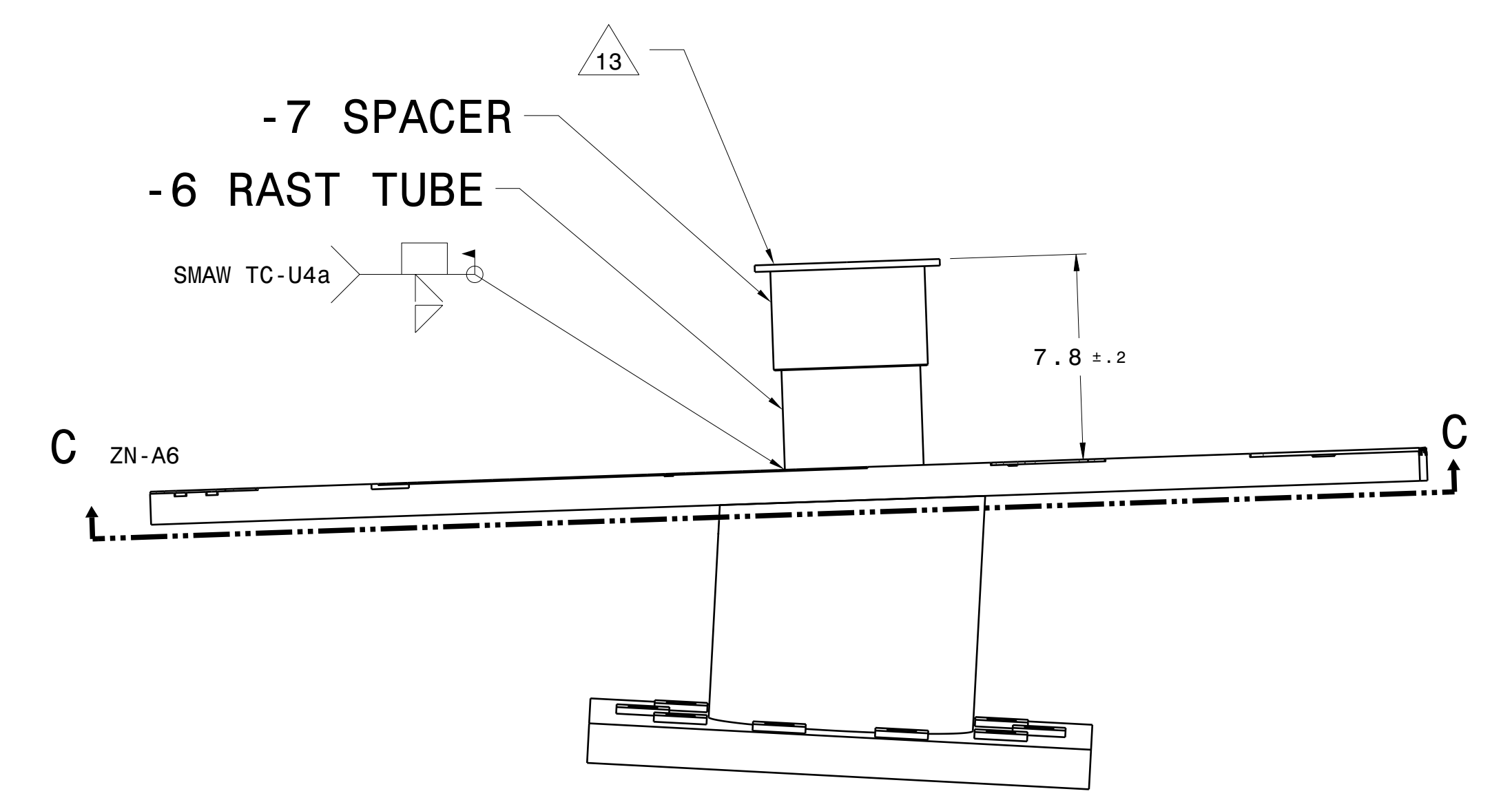
**-2 STATIC DISPLAY STAND ASSEMBLY**  
 (VIEW LOOKING FWD)  
 SCALE: 1:5



**SECTION VIEW B-B**  
 ZN-F2  
 SCALE: 1:5



**SECTION VIEW C-C**  
 ZN-C3  
 SCALE: 1:5



**SECTION VIEW A-A**  
 ZN-F4  
 SCALE: 1:5

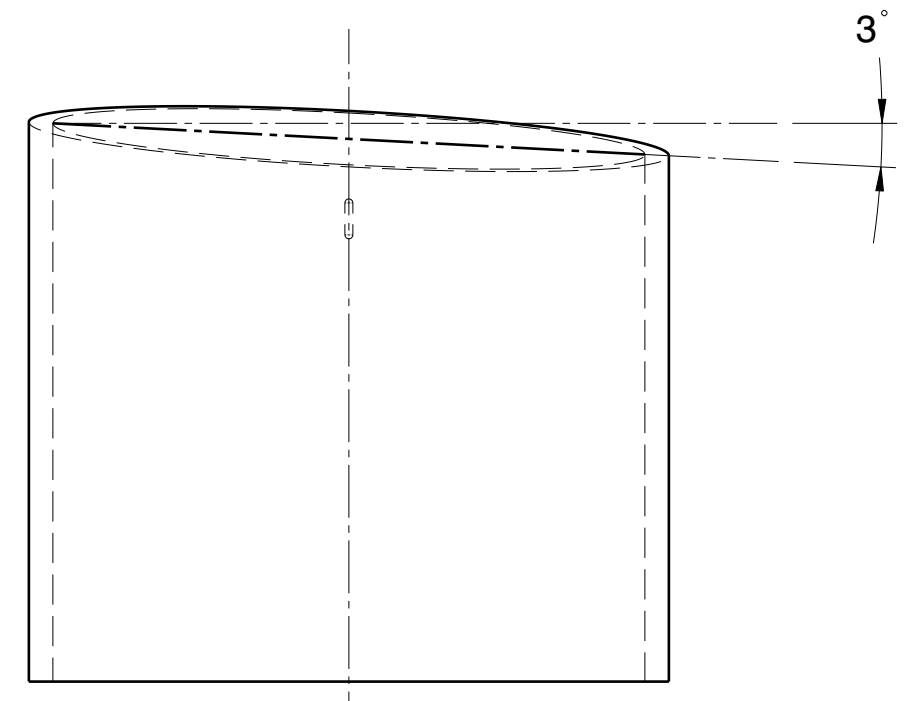
DISTRIBUTION STATEMENT D - DISTRIBUTION AUTHORIZED TO DEPARTMENT OF DEFENSE AND U.S. DOD CONTRACTORS ONLY DUE TO CRITICAL TECHNOLOGY, DETERMINED ON 16 JUNE, 2015. OTHER REQUESTS FOR THIS DOCUMENT SHALL BE REFERRED TO COMMANDING OFFICER, FLEET READINESS CENTER EAST MARINE CORPS AIR STATION, CHERRY POINT, NC 28533

SEE SHEET 1 FOR NOTES AND PARTS LIST

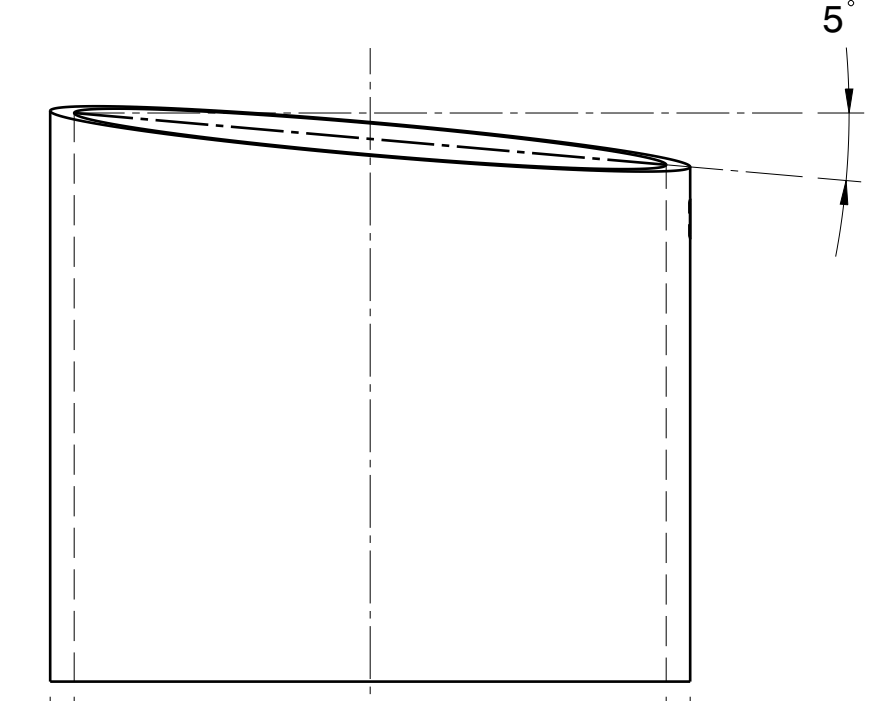
DRWN	A. MCCALLISTER	11-8-23	SIZE	DAT	DWG NO.	REV
CHECKED			E	96916	22E2946	
ENGINEER			SCALE: NONE	REF		SHEET 2

DWG NO.: 22E2946

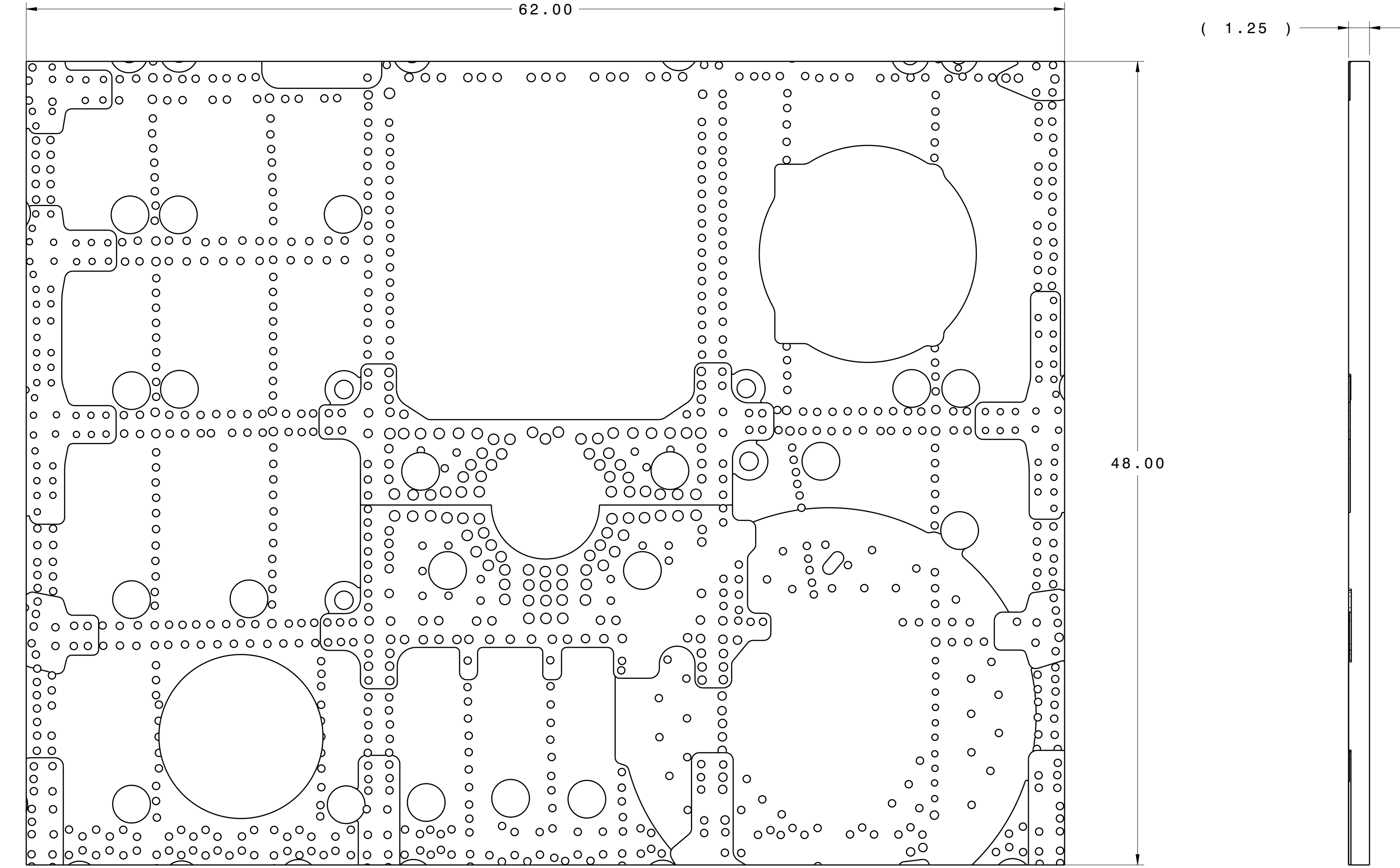
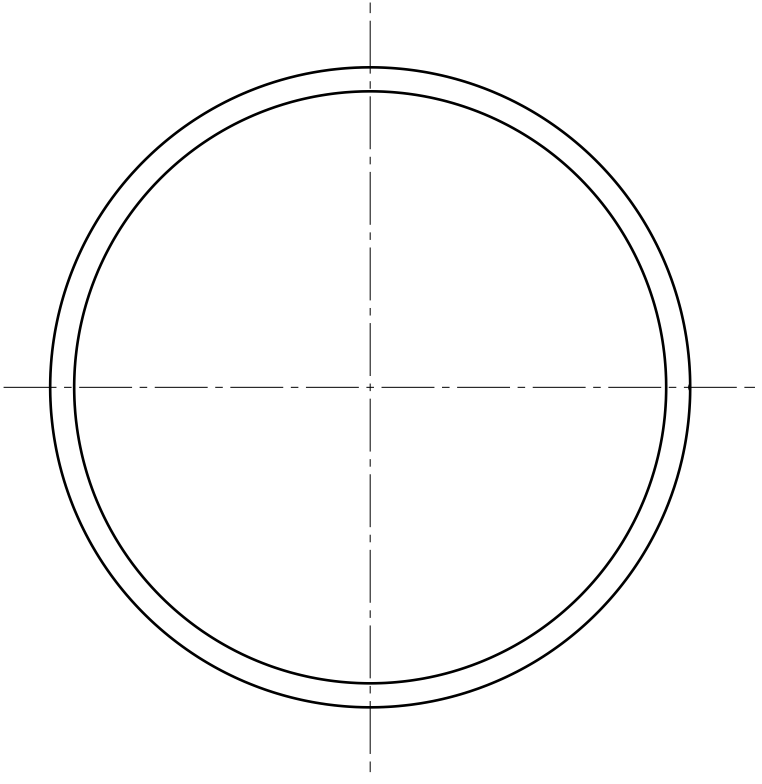
REVISION HISTORY			
ZONE	REV	DESCRIPTION	APPROVED



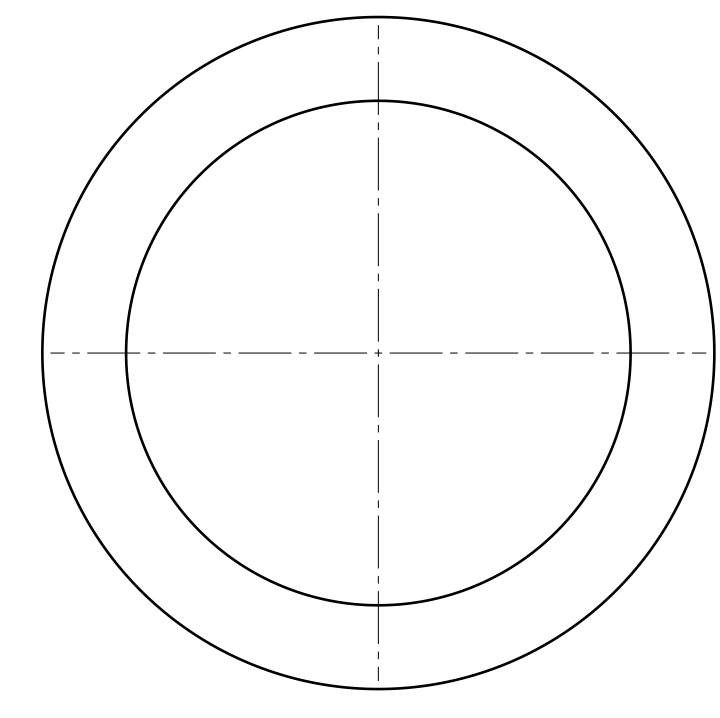
**-3 LOWER TUBE**  
SCALE: 1:3



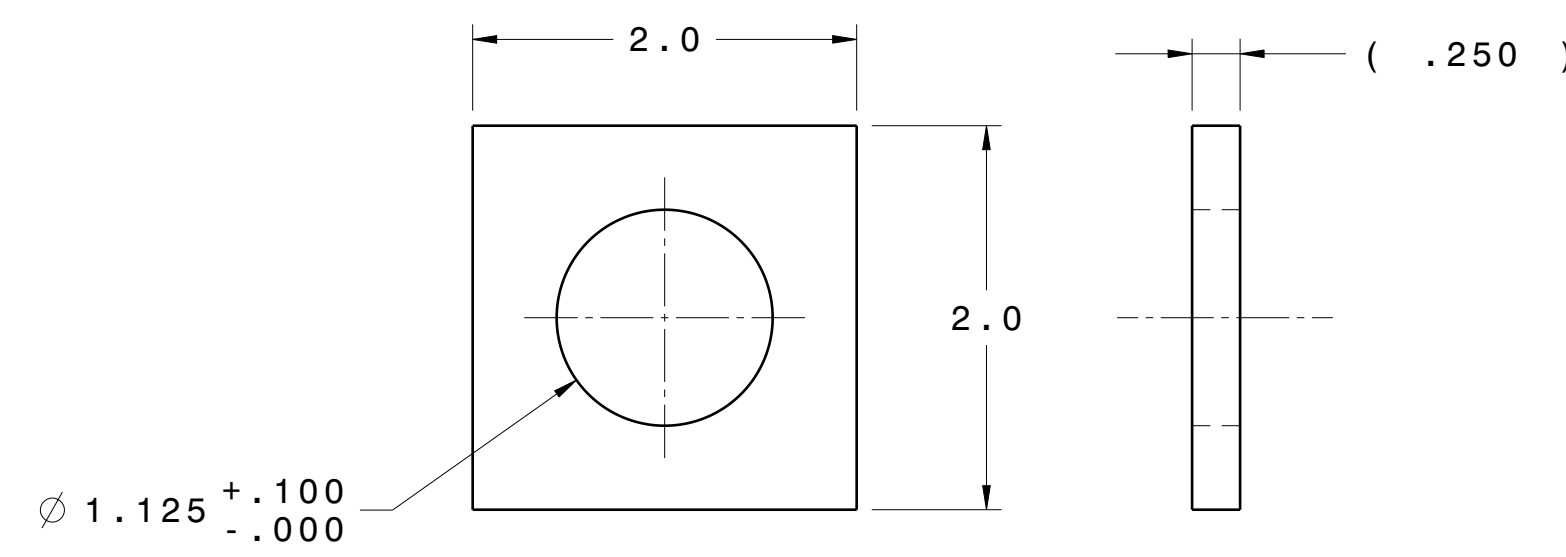
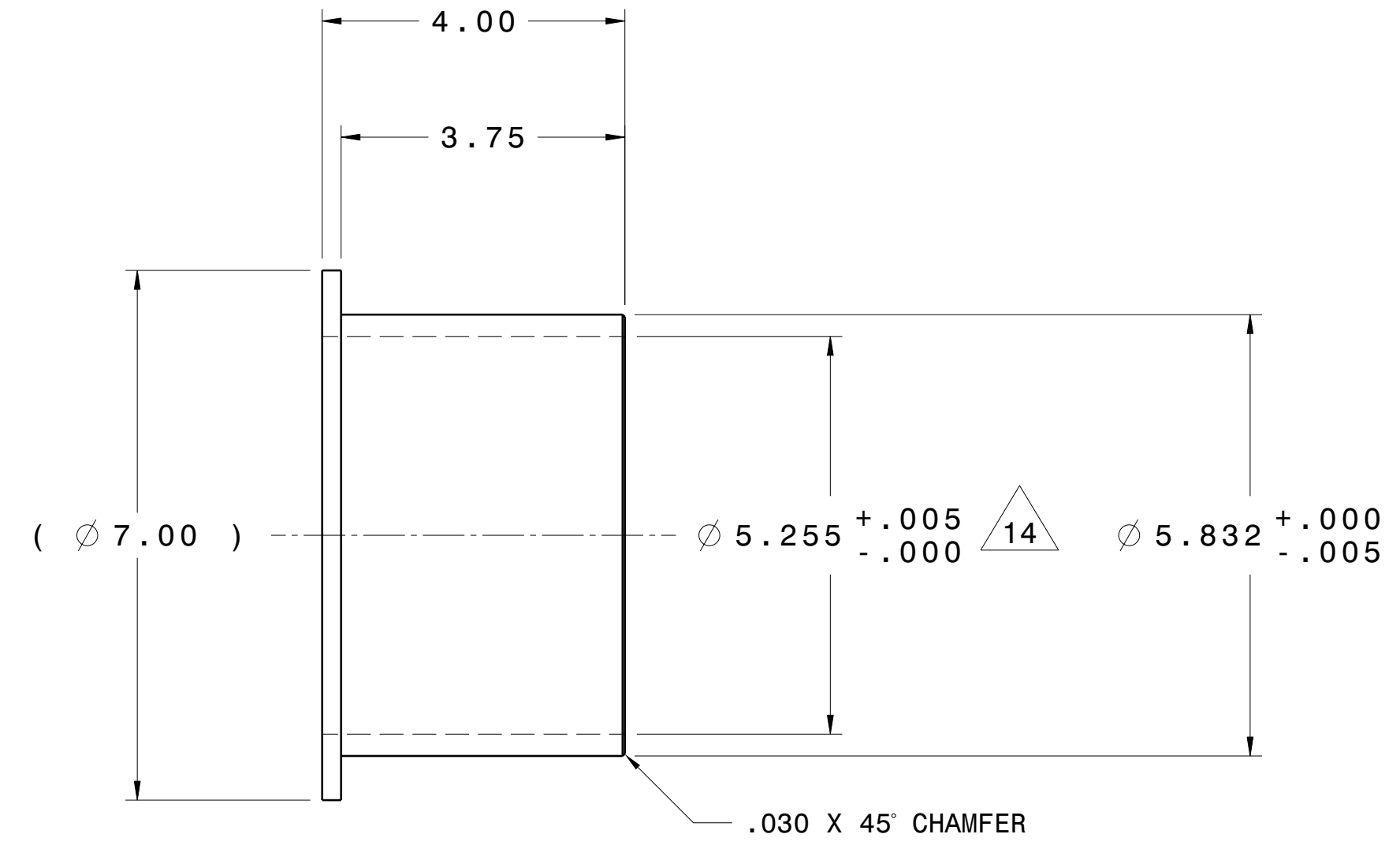
( 9.25 )  
( 10.00 )



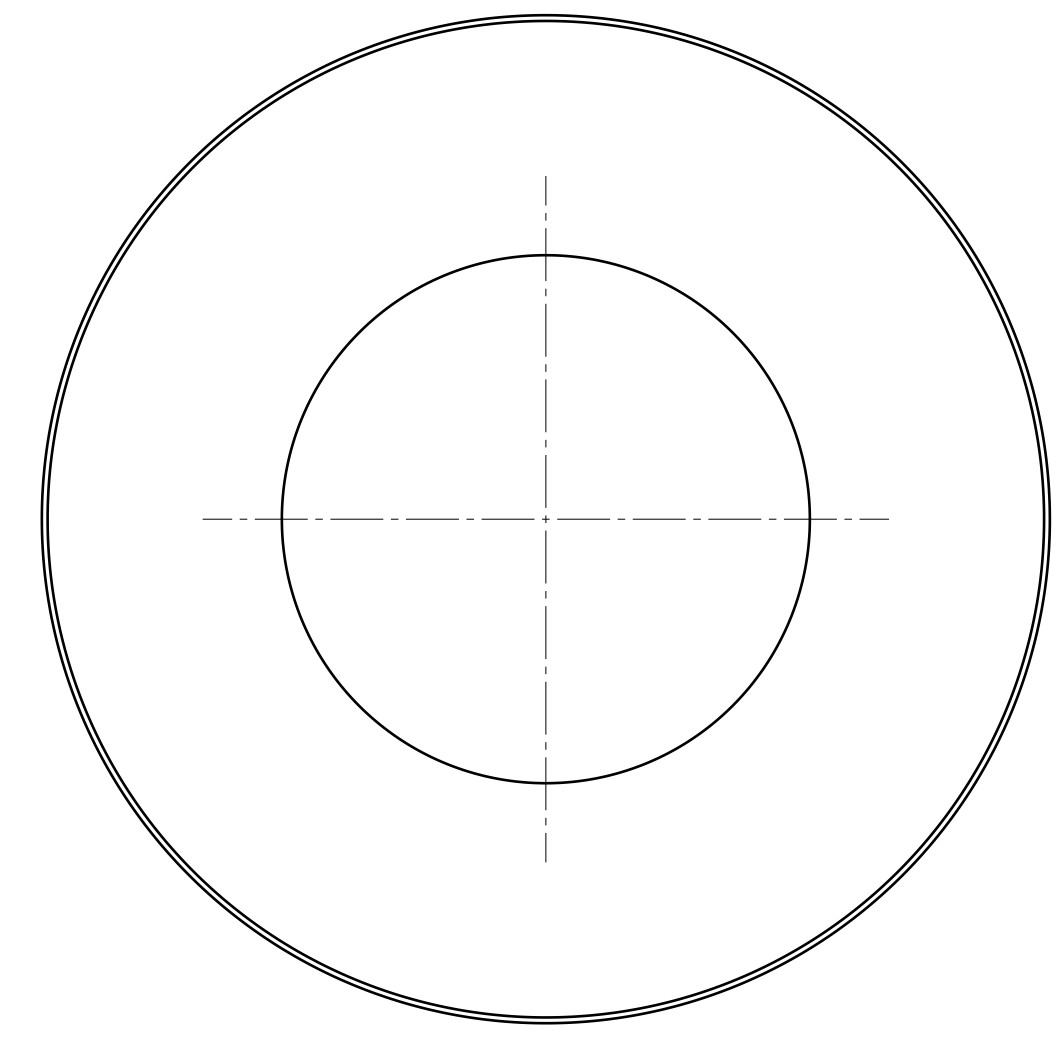
**-5 UPPER PLATE**  
SCALE: 1:5



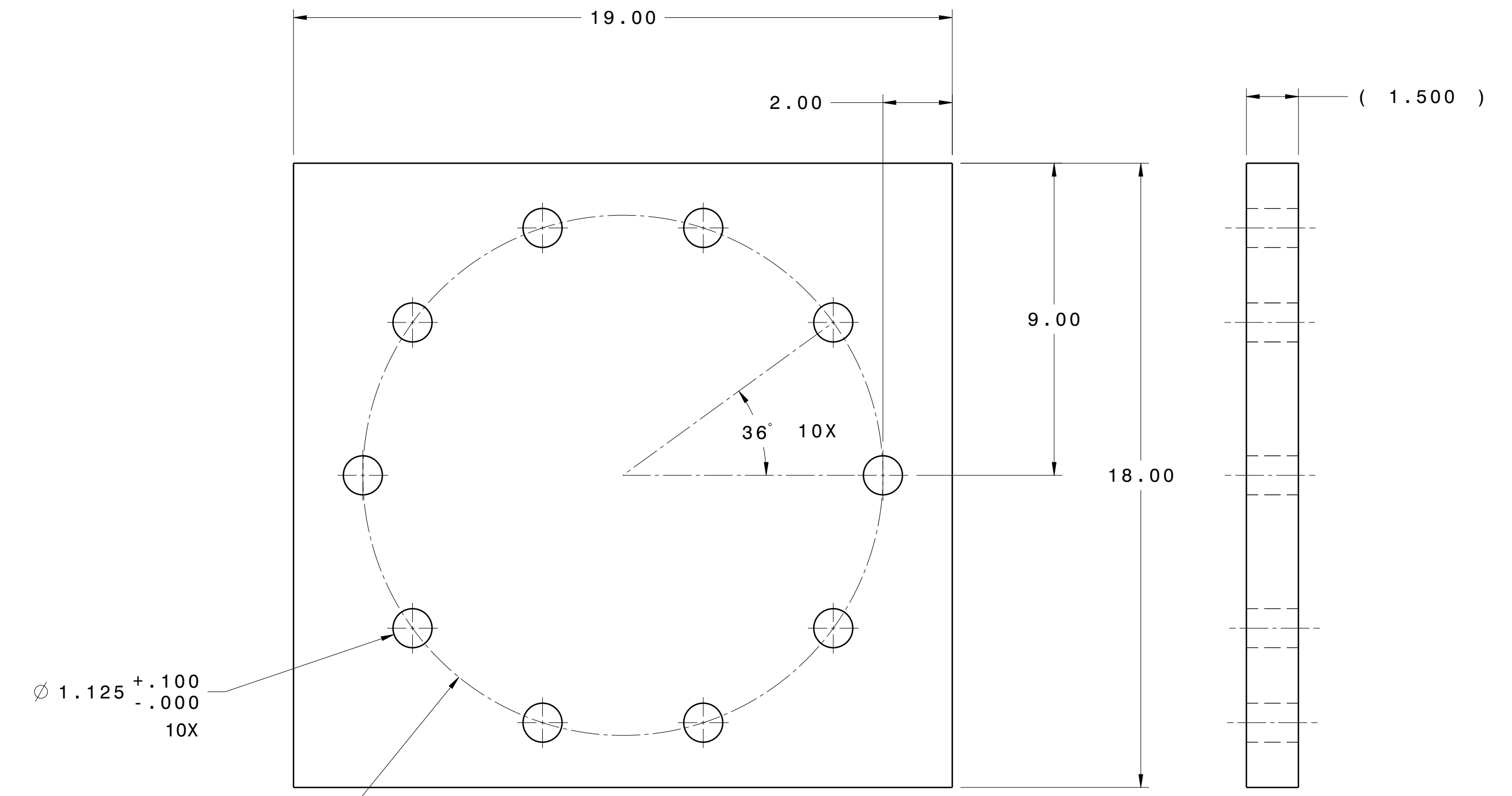
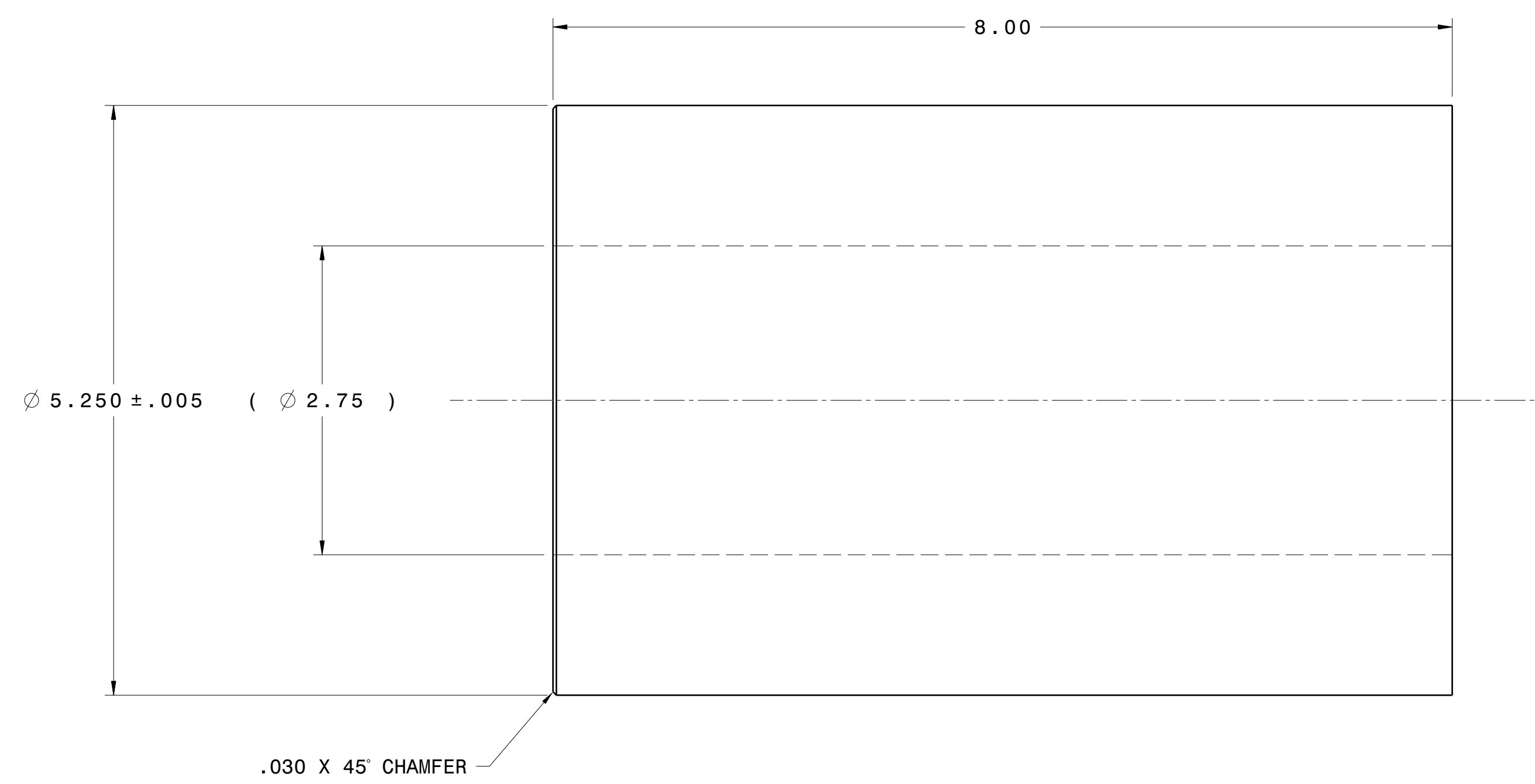
**-7 SPACER** 17  
SCALE: 1:2



**-8 PLATE WASHER**  
SCALE: 1:1



**-6 RAST TUBE** 16  
SCALE: 1:1



**-4 LOWER PLATE**  
SCALE: 1:3

DISTRIBUTION STATEMENT D - DISTRIBUTION AUTHORIZED TO DEPARTMENT OF DEFENSE AND U.S. DOD CONTRACTORS ONLY DUE TO CRITICAL TECHNOLOGY, DETERMINED ON 16 JUNE, 2015. OTHER REQUESTS FOR THIS DOCUMENT SHALL BE REFERRED TO COMMANDING OFFICER, FLEET READINESS CENTER EAST MARINE CORPS AIR STATION, CHERRY POINT, NC 28533

SEE SHEET 1 FOR NOTES AND PARTS LIST

DRAWN	A. MCCALLISTER	11-8-23	SIZE	A1	DWG NO.	22E2946	REV	
CHECKED			SCALE	E	96916			
ENGINEER			REF					